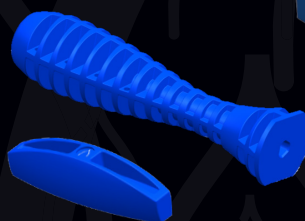




# THE WISHBONE MEDICAL BROKEN SCREW REMOVAL SYSTEM

THE SINGLE-USE, STERILE PACKED SOLUTION  
**EVERY OR NEEDS** FOR BROKEN & STRIPPED SCREWS.

- Three kits for varied screw diameters (see below)
- Instruments for the removal of screw shafts
- EZ Out for extraction of stripped or damaged screw heads
- T-Handle and Inline Handle offered for intra-operative flexibility
- Pristine and ready to use!



BROKEN SCREW REMOVAL SYSTEMS

2.7 mm



3.5 mm



4.5 mm



STERILE KIT #	DESCRIPTION
KIT-BSK-270	2.7mm Broken Screw Removal System

STERILE KIT #	DESCRIPTION
KIT-BSK-350	3.5mm Broken Screw Removal System

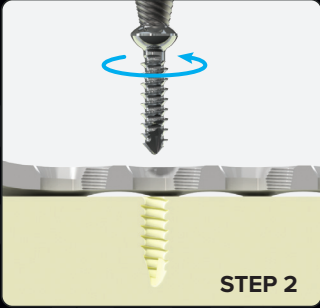
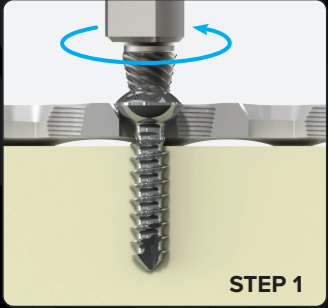
STERILE KIT #	DESCRIPTION
KIT-BSK-450	4.5mm Broken Screw Removal System



# SURGICAL TECHNIQUE

Inline or T-Handle can be used with EZ Out, Trepine, or Conical Extractor based on spatial clearance and/or surgeon's preference.

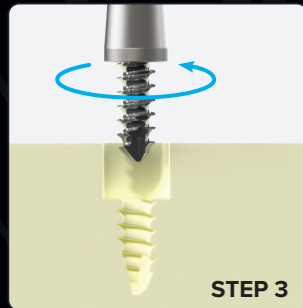
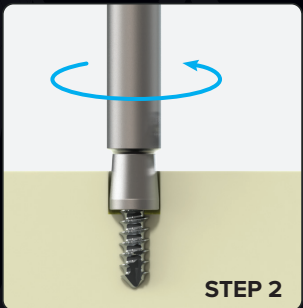
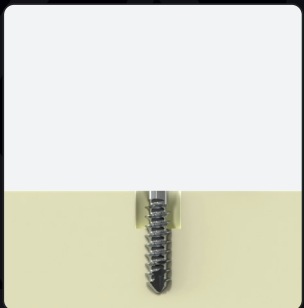
STRIPPED OR DAMAGED  
SCREW-HEAD REMOVAL  
WITH EZ OUT



**Step 1:** The EZ Out is placed into the stripped or damaged screw head.  
**Step 2:** The handle is rotated in a counter-clockwise direction until the screw is removed.

● = Reverse/Counterclockwise

SCREW SHAFT  
REMOVAL



**Step 1:** The Trepine is placed over the shaft of the screw and rotated in a counter-clockwise direction until the Trepine bottoms out on the shaft of the screw or until the counter-bore is deep enough for the Conical Extractor to be used.  
**Step 2:** The Conical Extractor is placed into the counter-bore with the shaft of the screw within the opening of the Conical Extractor.  
**Step 3:** The handle is rotated in a counter-clockwise direction until the screw is removed.

**Note:** If experiencing difficulty engaging the threads of the screw shaft with the Conical Extractor, consider off axis alignment for engagement.

Caution: Federal law restricts this device to sale by or on the order of a physician.



WishBoneMedical.com  
100 Capital Drive  
Warsaw, IN 46582  
+1-574-306-4006

For product information, including indications, contraindications, warnings, precautions and potential adverse effects, visit WishBone Medical's Instructions for Use page online: [www.WishBoneMedical.com/IFU](http://www.WishBoneMedical.com/IFU).