

# SMART CORRECTION® EXTERNAL FIXATOR SYSTEM

## HARDWARE REMOVAL

### COMPONENTS NEEDED

1. T-Handle with Jacob's Chuck
2. T-Handle for Half Pins (AO Connector)
3. Wire Cutter/Plier
4. Rod Cutter
5. 10mm Hex Bolt Wrench
6. 13mm Hex Bolt Wrench
7. T-Allen Wrench



# HARDWARE REMOVAL

## 1 Pin Removal

Using a 10mm Hex Bolt Wrench, loosen the connections on all Half Pins. Then, remove the Half Pins using T-Handle with Jacob's Chuck (fig. 1).

## 2 Wire Cutting

Cut each wire on both sides approximately 1cm from the skin using the Wire Cutter/Plier.

**Note:** Struts may need to be loosened to facilitate Frame removal.

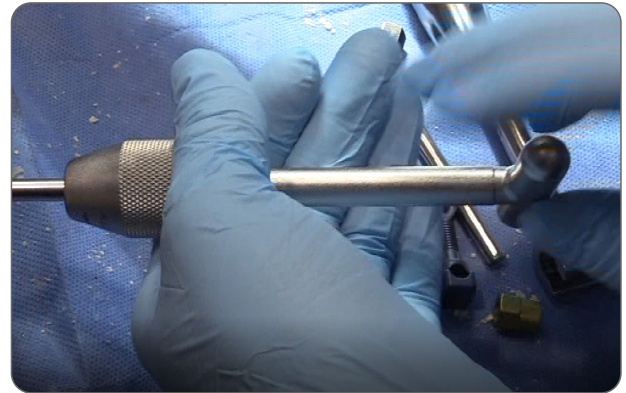


fig. 1 - Remove Half Pin

## 3 Frame Removal

Carefully slide the entire frame off of the affected limb.

**Caution:** If Olive Wires were used, take note of which side the Olive is on (as indicated by etching on Wire) for appropriate removal.

## 4 Wire Removal

Remove all Wires from the patient. The Wire Cutter/Plier is available to aid in Wire removal.

**Caution:** If Olive Wires were used, do not pull the olive through bone. Instead, pull the side with the olive (this is the side with the laser etched bands).

**Caution:** Any wire that is pulled through the bone must be straight and free of debris.



# WISHBONE M E D I C A L

WishBoneMedical.com

100 Capital Drive  
Warsaw, IN 46582

+1-574-306-4006

**Caution: Federal law restricts this device to sale by or on the order of a physician.**

All trademarks herein are the property of WishBone Medical, Inc. or its subsidiaries unless otherwise indicated. This material is intended for the sole use and benefit of Health Care Professionals and the WishBone Medical Sales Force. It is not to be redistributed, duplicated or disclosed without the express written consent of WishBone Medical.

**For product information, including indications, contraindications, warnings, precautions and potential adverse effects, as well as *Patient Instructions for Use*, visit WishBone Medical's Instructions for Use page online: [www.WishBoneMedical.com/IFU](http://www.WishBoneMedical.com/IFU).**

The MR environment presents risks to patients with metal implants. Physicians should consider the risks when recommending MR imaging for patients with metal implants.

The WishBone Medical Smart Correction® System components have not been evaluated for safety and compatibility in MR environment.