

ORDER INFORMATION

All kits are available in titanium (Ti) or stainless steel (SS) options.

Check with your local sales representative for product availability.

CANNULATED SCREW KITS

Curved 2-Hole WishFIX Plate Procedure Kits

KIT COMPONENTS	QTY
Curved 2-Hole WishFIX Plate (12, 16, 20, 22 or 24mm)	1
WishFIX 1.6mm Guide Wire	3
1.7mm Cannulated Plate Holder	1
WishFIX 1.6/2.8mm Double-Ended Drill Guide	1
WishFIX Direct Measurement Device	1
2.8mm x 175mm Cannulated Drill Bit	1
Cannulated T20 Screwdriver	1
4.5mm x 16mm WishFIX Cannulated Screw (SS or Ti)	2
4.5mm x 24mm WishFIX Cannulated Screw (SS or Ti)	2
4.5mm x 28mm (SS) or 4.5mm x 32mm (Ti) WishFIX Cannulated Screw	2

Curved 4-Hole WishFIX Plate Procedure Kits

KIT COMPONENTS	QTY
Curved 4-Hole WishFIX Plate (14, 16, 22, 26 or 32mm)	1
WishFIX 1.6mm Guide Wire	5
1.7mm Cannulated Plate Holder	1
WishFIX 1.6/2.8mm Double-Ended Drill Guide	1
WishFIX Direct Measurement Device	1
2.8mm x 175mm Cannulated Drill Bit	1
Cannulated T20 Screwdriver	1
4.5mm x 24mm WishFIX Cannulated Screw (SS or Ti)	4
4.5mm x 28mm (SS) or 4.5mm x 32mm (Ti) WishFIX Cannulated Screw	4

Curved 2-Hole WishFIX Plate Express Kits

KIT COMPONENTS	QTY
Curved 2-Hole WishFIX Plate (12, 16, 20, 22 or 24mm)	1
WishFIX 1.6mm Threaded Guide Wire	4
1.7mm Cannulated Plate Holder	1
2.8mm x 175mm Cannulated Drill Bit	1
Cannulated T20 Screwdriver	1
4.5mm x 24mm WishFIX Cannulated Screw (SS or Ti)	2
4.5mm x 28mm WishFIX Cannulated Screw (SS or Ti)	2

Curved 4-Hole WishFIX Plate Express Kits

KIT COMPONENTS	QTY
Curved 4-Hole WishFIX Plate (14, 16, 22, 26 or 32mm)	1
WishFIX 1.6mm Threaded Guide Wire	6
1.7mm Cannulated Plate Holder	1
2.8mm x 175mm Cannulated Drill Bit	1
Cannulated T20 Screwdriver	1
4.5mm x 24mm WishFIX Cannulated Screw (SS or Ti)	2
4.5mm x 28mm WishFIX Cannulated Screw (SS or Ti)	2
4.5mm x 32mm WishFIX Cannulated Screw (SS or Ti)	2

SOLID SCREW KITS

Curved 2-Hole WishFIX Plate Procedure Kits

KIT COMPONENTS	QTY
Curved 2-Hole WishFIX Plate (12, 16, 20, 22 or 24mm)	1
WishFIX 1.6mm Guide Wire	3
1.7mm Cannulated Plate Holder	1
WishFIX 1.6/2.8mm Double-Ended Drill Guide	1
WishFIX Direct Measurement Device	1
2.8mm x 175mm Cannulated Drill Bit	1
Cannulated T20 Screwdriver	1
4.5mm x 24mm WishFIX Solid Screw (SS or Ti)	2
4.5mm x 28mm WishFIX Solid Screw (SS or Ti)	2
4.5mm x 32mm WishFIX Solid Screw (SS or Ti) (included with 20mm, 22mm & 24mm plates only)	2

Curved 4-Hole WishFIX Plate Procedure Kits

KIT COMPONENTS	QTY
Curved 4-Hole WishFIX Plate (14, 16, 22, 26 or 32mm)	1
WishFIX 1.6mm Guide Wire	5
1.7mm Cannulated Plate Holder	1
WishFIX 1.6/2.8mm Double-Ended Drill Guide	1
WishFIX Direct Measurement Device	1
2.8mm x 175mm Cannulated Drill Bit	1
Cannulated T20 Screwdriver	1
4.5mm x 24mm WishFIX Solid Screw (SS or Ti)	4
4.5mm x 28mm WishFIX Solid Screw (SS or Ti)	4

Curved 2-Hole WishFIX Plate Express Kits

KIT COMPONENTS	QTY
Curved 2-Hole WishFIX Plate (12, 16, 20, 22 or 24mm)	1
WishFIX 1.6mm Threaded Guide Wire	4
1.7mm Cannulated Plate Holder	1
2.8mm x 175mm Cannulated Drill Bit	1
Cannulated T20 Screwdriver	1
4.5mm x 24mm WishFIX Solid Screw (SS or Ti)	2
4.5mm x 28mm WishFIX Solid Screw (SS or Ti)	2

Curved 4-Hole WishFIX Plate Express Kits

KIT COMPONENTS	QTY
Curved 4-Hole WishFIX Plate (14, 16, 22, 26 or 32mm)	1
WishFIX 1.6mm Threaded Guide Wire	6
1.7mm Cannulated Plate Holder	1
2.8mm x 175mm Cannulated Drill Bit	1
Cannulated T20 Screwdriver	1
4.5mm x 24mm WishFIX Solid Screw (SS or Ti)	2
4.5mm x 28mm WishFIX Solid Screw (SS or Ti)	2
4.5mm x 32mm WishFIX Solid Screw (SS or Ti) (included with 20mm, 22mm & 24mm plates only)	2

If "Made in USA" product configuration is required, add -US to part number when ordering.

For information on sterile packed ancillaries, please refer to the WishBone Product Catalog (LIT-PC-WBM) or contact your local rep for product availability.

- Ballal MS, Bruce CE, Nayagam S. Correcting genu varum and genu valgum in children by guided growth. J Bone Joint Surg. Vol. 92-B, No. 2, February 2010.
- Danino B, Rödl R, Herzenberg JE, Shabtai L, Grill F, Narayanan U, Segev E, Wientroub S. Guided growth: preliminary results of a multinational study of 967 physes in 537 patients. J Child Orthop 2018;12:91-96. DOI 10.13 02/1863-2548.12.170050.
- Stevens PM. Guided Growth for Angular Correction. J Pediatr Orthop. Volume 27, Number 3. April/May 2007.

For product information, including indications, contraindications, warnings, precautions and potential adverse effects, visit WishBone Medical's Instructions for Use page online: www.WishBoneMedical.com/IFU.



100 Capital Drive
Warsaw, IN 46582
+1-574-306-4006

WishFIX

GROWTH CONTROL PLATING SYSTEM



A significant number of children suffer from the discomfort of angular limb deformities.¹ The WishFIX™ System is an effective growth control plating solution for temporary hemiepiphyseal, a proven treatment with low complication rates.²

The curved plates are designed for use in both upper and lower extremities and allow physicians to redirect the growth angle of the long bone, gradually correcting the angular deformity in pediatric patients with open physes.^{1,3}

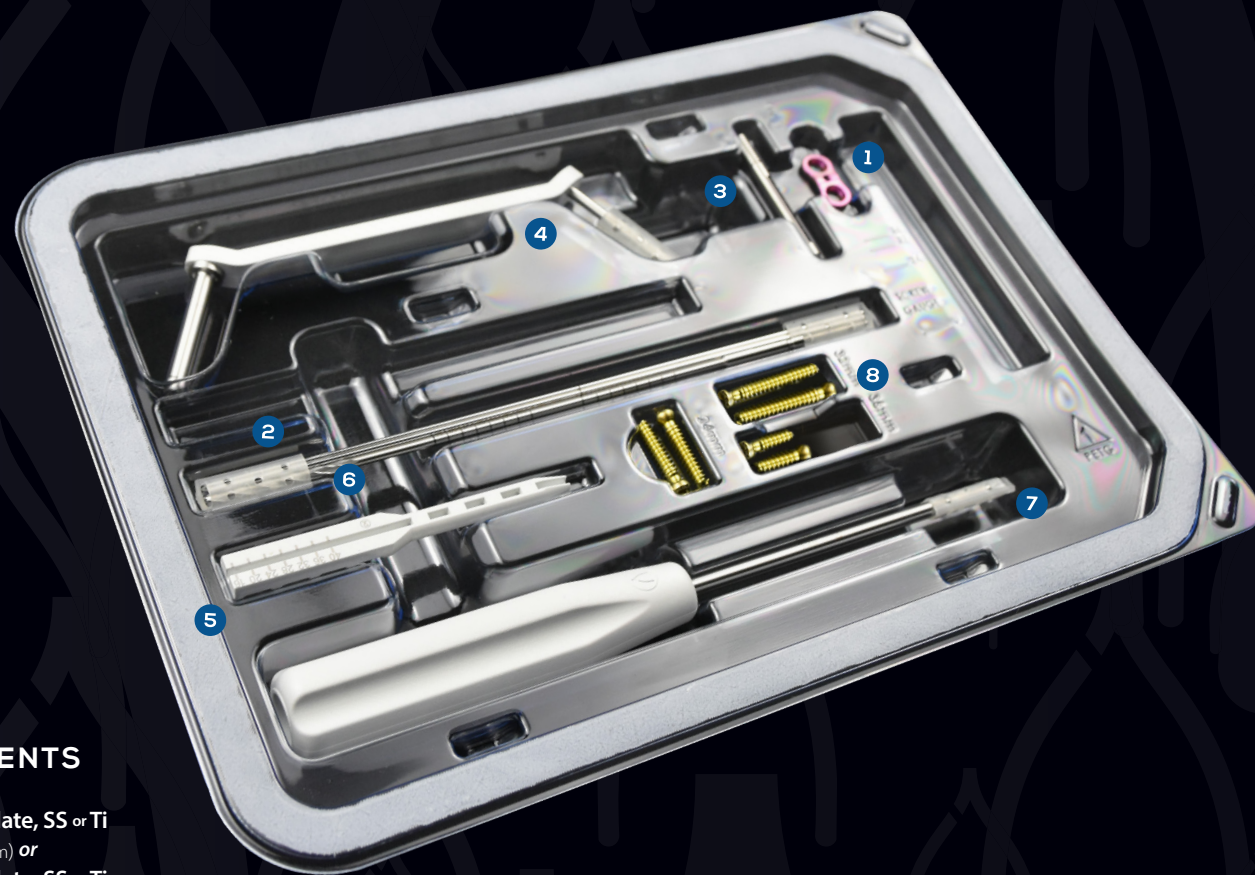
This surgical solution is recommended as a first line of treatment, preferred over major surgical intervention, such as osteotomies.² Immediately following the procedure, the patient is allowed mobility and weight bearing.³



WISHBONE
MEDICAL

WishFIX[®]

Single-Use. Sterile Packed.
Ready to Use.

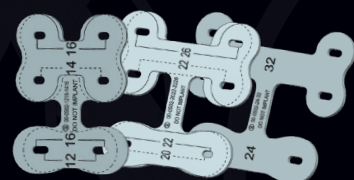


KIT COMPONENTS

- 1 Curved 2-Hole Plate, SS or Ti (12, 16, 20, 22, 24mm) or Curved 4-Hole Plate, SS or Ti (14, 16, 22, 26, 32mm)
- 2 1.6mm Guide Wire (x3 or x5)
- 3 1.7mm Cannulated Plate Holder
- 4 Double-Ended Drill Guide
- 5 Direct Measurement Device
- 6 2.8mm x 175mm Cannulated Drill Bit
- 7 Cannulated T20 Screwdriver
- 8 4.5mm Cannulated Screws

PLATE TEMPLATES

Plate templates are available as a separate sterile packed ancillary item (ITEM # EFTEMPS-08).



Templates are not intended for screw positioning or use with threaded guide wires.

THE FULL SPECTRUM

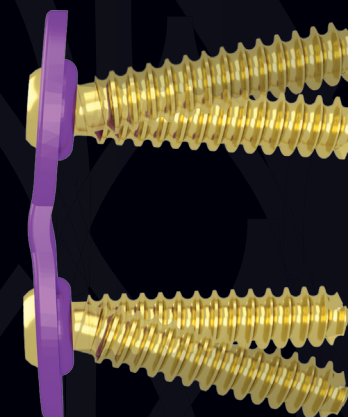
Titanium and Stainless Steel Plating Options



Low-profile plates designed to conform to patient anatomy

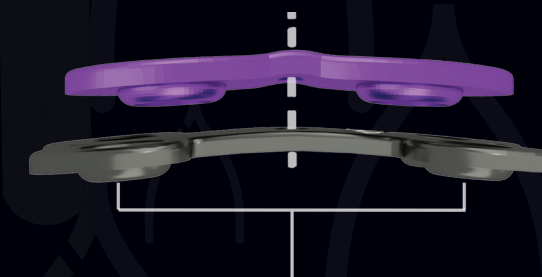
Low-profile plates designed to conform to patient anatomy

Recessed screw holes are designed to hold the drill guides securely and allow low-profile screw seating



System designed to allow for screw angulation, which facilitates guided growth of limbs^{1,2,3}

Central pilot hole designed to precisely place plate over physis



Protruding bosses designed to elevate plate for reduced contact with growth plate and periosteum

4.5mm CANCELLOUS SCREWS

- Cannulated or solid screws included in each kit
- Available in titanium or stainless steel
- T20 hexalobe drive
- Self-tapping
- Fully threaded shaft designed to resist pull out forces and facilitate screw removal



STERILE ANCILLARIES

Select components are available as sterile packed ancillary items.

For more information, please refer to the WishBone Product Catalog (LIT-PC-WBM) or contact your local rep for product availability.

PLATE LENGTHS

4-HOLE: 14mm 16mm 22mm 24mm 26mm 32mm
2-HOLE: 12mm 16mm 20mm 28mm 32mm

SCREW LENGTHS

Ti: 16mm 20mm 24mm 28mm 32mm 36mm
SS: 16mm 20mm 24mm 28mm 32mm 36mm