

SMART

Correction™

EXTERNAL FIXATOR SYSTEM

Hardware Removal

COMPONENTS NEEDED

1. T-Handle with Jacob's Chuck
2. T-Handle for Half Pins (AO Connector)
3. Wire Cutter/Plier
4. Rod Cutter
5. 10mm Hex Bolt Wrench
6. 13mm Hex Bolt Wrench
7. T-Allen Wrench



HARDWARE REMOVAL

1 Pin Removal

Using a 10mm Hex Bolt Wrench, loosen the connections on all Half Pins. Then, remove the Half Pins using T-Handle with Jacob's Chuck (fig. 1).

2 Wire Cutting

Cut each wire on both sides approximately 1cm from the skin using the Wire Cutter/Plier.

Note: Struts may need to be loosened to facilitate Frame removal.

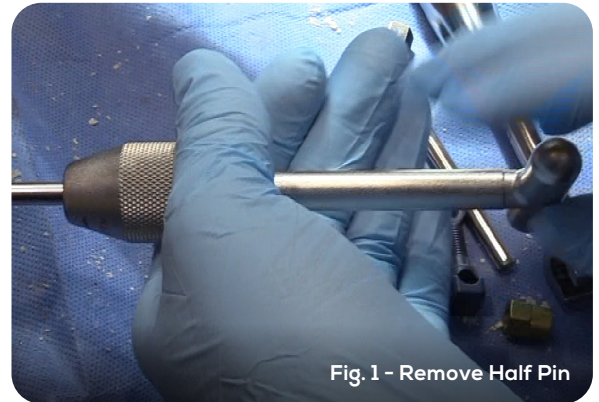


Fig. 1 - Remove Half Pin

3 Frame Removal

Carefully slide the entire frame off of the affected limb.

Caution: If Olive Wires were used, take note of which side the Olive is on (as indicated by etching on Wire) for appropriate removal.

4 Wire Removal

Remove all Wires from the patient. The Wire Cutter/Plier is available to aid in Wire removal.

Caution: If Olive Wires were used, do not pull the olive through bone. Instead, pull the side with the olive (this is the side with the laser etched bands).

Caution: Any wire that is pulled through the bone must be straight and free of debris.



WishBoneMedical.com

100 Capital Drive
Warsaw, IN 46582
+1-574-306-4006

All trademarks here in are the property of WishBone Medical, Inc. or its subsidiaries unless otherwise indicated. This material is intended for the sole use and benefit of Health Care Professionals and the WishBone Medical Sales Force. It is not to be redistributed, duplicated or disclosed without the express written consent of WishBone Medical.

Caution: Federal law restricts this device to sale by or on the order of a physician.

The MR environment presents risks to patients with metal implants. Physicians should consider the risks when recommending MR imaging for patients with metal implants.

The Smart Correction System components have not been evaluated for safety in the MR environment. They have not been tested for heating or unwanted movement in the MR environment. The safety of the Smart Correction System in the MR environment is unknown. Performing an MR exam on a person who has this medical device may result in injury or device malfunction.

For product information, including indications, contraindications, warnings, precautions and potential adverse effects, visit WishBone Medical's Instructions for Use page online: www.WishBoneMedical.com/IFU.