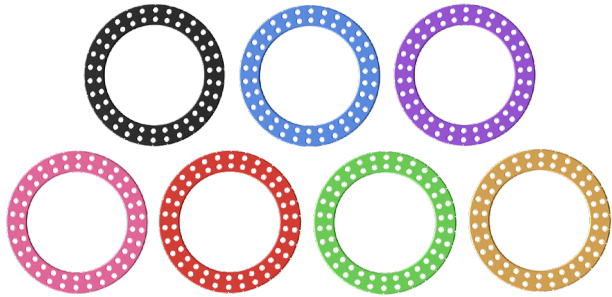


SMALLER RINGS FOR YOUR SMALLEST PATIENTS

AVAILABLE IN AN ASSORTMENT OF COLORS!



Standard: Black, Blue and Purple
Special Order: Pink, Red, Green and Gold

- The Smart Correction system offers full diameter and 2/3 pediatric rings in multiple colors
- Available sizes: 70mm, 80mm and 90mm



We WORK



so they can **PLAY.**



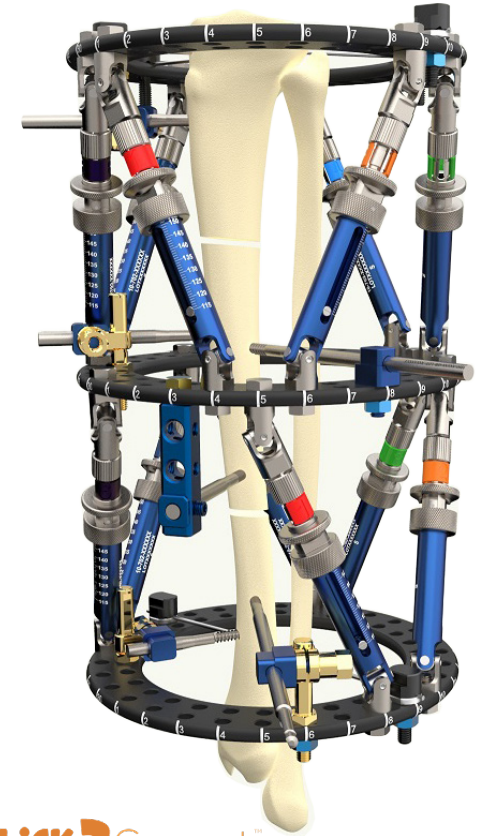
100 Capital Drive
Warsaw, IN 46582
+1-574-306-4006

WishBoneMedical.com

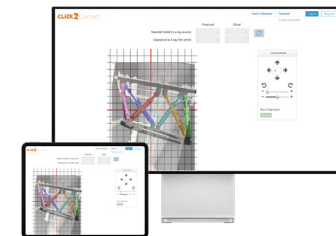
© 2022 WishBone Medical, Inc. | LIT-SB-SCEF REV B | 12-2022

SMART Correction[®]

EXTERNAL FIXATOR SYSTEM



CLICK2Correct[™]



 **WISHBONE**
MEDICAL

SMART Correction[®]

EXTERNAL FIXATOR SYSTEM

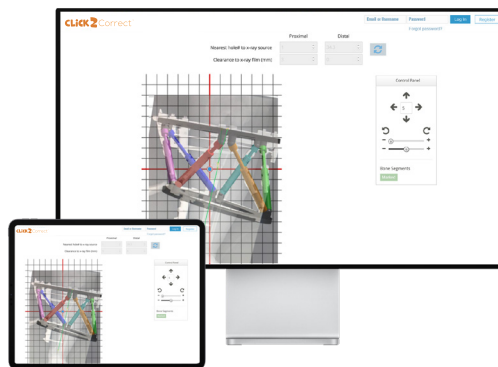
**TAILOR THE CONSTRUCT TO THE PATIENT,
NOT THE OTHER WAY AROUND!**

- Strong, lightweight frames for patient comfort
- Low-profile (6mm) Dual Hole Full, 1/2, 2/3 and 1/3 Rings and 8mm Dual Hole Foot Rings
- Free strut placement—No reference or master tabs. Place struts, pins and wires wherever needed on a ring



Standard and Express Struts with a correction range of 60-300mm

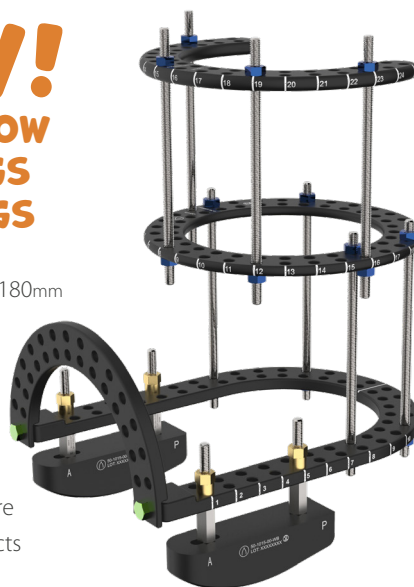
PRECISE CORRECTION IN ALL PLANES



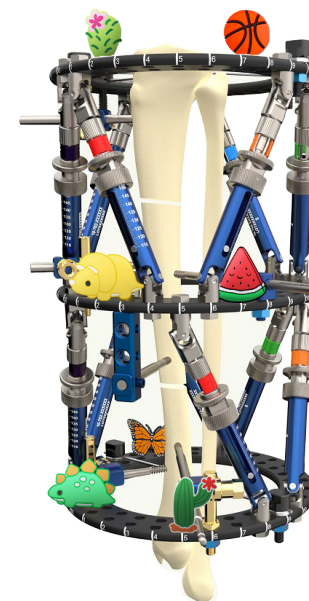
WITH WEB-BASED **CLICK 2 Correct™** SOFTWARE.

NEW! DOUBLE ROW FOOT RINGS & 1/2 RINGS

- 120mm, 150mm and 180mm diameter Full and 1/2 Rings for acute correction and secondary protection situations that require static frame constructs
- Horizontal or parallel 1/2 Ring attachment points provide greater stability for the patient
- 8mm thick foot ring for strength and stability



FOR **SMART CORRECTION[®]** EXTERNAL FIXATORS



**GIVE YOUR PATIENT THE OPPORTUNITY
TO CUSTOMIZE THEIR FRAMES WITH AN
ASSORTMENT OF RING BLING™**

- Patients can choose from an assortment of themes:
Snack Time, Go Green, Basketball, Football, Soccer, Dinosaur, and Butterfly

ATTACH & SWAP OUT USING FRAME ADAPTERS



For the full list of Ring Bling™ options, refer to LIT-PAF-SCEF

We **WORK** so they can **PLAY**™